

# Early Care and Education Partners Weekly Update Webinar

*Reuniones Web Semanales para Socios de  
Educación y Cuidado Temprano*

February 10, 2021

## Important Dates

*Fechas  
importantes*

- **Provider Services Committee Meeting**
- Thursday, February 25, 2021
- Zoom Meeting ID: 978 7055 6219; Passcode: ELC0225
  
- Board of Directors Meeting
- Monday, March 1, 2021
- Zoom Meeting ID: 919 4073 2249; Passcode: 03012020

Provider  
Representatives

*Representantes de  
los Proveedores*

- **Ms. Loreen Chant**
  - President/CEO of Easter Seals South Florida
  - Representative of program under federal Individuals with Disabilities Education Act
  
- **Ms. Jennifer Roig**
  - President/Founder of the Roig Academy
  - Representative of private for-profit child care providers
  
- **Dr. Eileen Fluney**
  - Executive Director of Paradise Christian School & Development Center
  - Representative of faith based child care providers

[myproviderrep@elcmdm.org](mailto:myproviderrep@elcmdm.org)

# Board Vacancy



- The Early Learning Coalition of Miami- Dade/Monroe is seeking a candidate to fill a Representative of a program under federal Individuals with Disabilities Education Act Child Care Providers on its Board of Directors.
- Candidate must:
  - reside in Florida and
  - be associated with a Disabilities Education child care business entity conducting business in Miami-Dade or Monroe County
- Please contact Lisa Sanabria at (305) 646-7220 x. 2246 for an application, or visit our website, [www.elcmdm.org](http://www.elcmdm.org) and click on the Board of Director's Application link [here](#).
- Applications must be submitted by February 26, 2021.

# Celebration of the Hands

Be a part of a time-honored tradition and have your child's hand art included in the Celebration of the Hands for Children's Week Florida 2021.

**Mail the hand artwork before March 19, 2021**

**The Early Learning Coalition of the Big Bend Region  
2639 N. Monroe Street, Building C  
Tallahassee, FL 32303**

[Click here](#) to download the Celebration of the Hands flyer and instructions on how to create the Hand Art.



## Small Business Grants up to \$10,000

- The Greater Miami Chamber of Commerce and CareerSource SF have set aside **\$500,000 for small businesses grants to REIMBURSE COVID-19 related expenses** as you pivoted to keep open and to keep workers employed.
- These grants are strictly for reimbursement and are fairly simple to secure for qualifying businesses that can substantiate their expenditures.
- We encourage our small business members (3-50 employees) to apply for the grant program. However, **only apply if you can check off all the qualifying information needed on the check list [here](#)**.
- For additional questions or information, please contact [layoffaversion@miamichamber.com](mailto:layoffaversion@miamichamber.com) or find out more about assistance through the Chamber <https://www.miamichamber.com/gmcc-cares>

[http://www.careersourcesfl.com/layoffaversion\\_GMiamiCC/](http://www.careersourcesfl.com/layoffaversion_GMiamiCC/)

## CRRSA Webinars

- **Early Care and Education Providers: Taking Advantage of the New Small Business Administration Loan and Grant Programs**
- These webinars provide an overview of the business resources in the [Coronavirus Response and Relief Supplemental Appropriations Act, 2021](#) (CRRSA), which was enacted on December 27, 2020.
- <https://childcareta.acf.hhs.gov/early-care-and-education-providers-taking-advantage-new-small-business-administration-loan-and-grant>



## Virtual Study Buddies for the Courses Included in the DOE Approved Staff Development Plan (SDP)



Implementing the Florida Early Learning and Developmental Standards in Preschool Classrooms: 3 Years Old to Kindergarten (VFSP)		
Date	Time	Eventbrite Registration Invitation
*Wednesday, February 10, 2021	10:30 am-12:00 pm	<a href="https://www.eventbrite.com/e/136972026017">https://www.eventbrite.com/e/136972026017</a>
*Thursday, February 18, 2021	3:00 pm-4:30 pm	<a href="https://www.eventbrite.com/e/136972220599">https://www.eventbrite.com/e/136972220599</a>
Integrating the Standards: Phonological Awareness (VIPA)		
Date	Time	Eventbrite Registration Invitation
*Thursday, February 11, 2021	1:00 pm-2:30 pm	<a href="https://www.eventbrite.com/e/136449954487">https://www.eventbrite.com/e/136449954487</a>
*Tuesday, February 23, 2021	6:30 pm-8:00 pm	<a href="https://www.eventbrite.com/e/136451015661">https://www.eventbrite.com/e/136451015661</a>
Language and Vocabulary in the VPK Classroom (LVPK)		
Date	Time	Eventbrite Registration Invitation
Tuesday, February 9, 2021	1:00 pm-2:30 pm	<a href="https://www.eventbrite.com/e/136847240781">https://www.eventbrite.com/e/136847240781</a>
Tuesday, February 9, 2021	5:00 pm-6:30 pm	<a href="https://www.eventbrite.com/e/136847674077">https://www.eventbrite.com/e/136847674077</a>
How to Administer the Florida VPK Assessment (HTVA)		
Date	Time	Eventbrite Registration Invitation
*Wednesday, February 3, 2021	12:30 pm-2:00 pm	<a href="https://www.eventbrite.com/e/136493566933">https://www.eventbrite.com/e/136493566933</a>
*Tuesday, February 9, 2021	12:30 pm-2:00 pm	<a href="https://www.eventbrite.com/e/136494058403">https://www.eventbrite.com/e/136494058403</a>
VPK Assessment Instructional Implications (VAII)		
Date	Time	Eventbrite Registration Invitation
*Friday, February 5, 2021	12:30 pm-2:00 pm	<a href="https://www.eventbrite.com/e/136494768527">https://www.eventbrite.com/e/136494768527</a>
*Wednesday, February 23, 2021	12:30 pm-2:00 pm	<a href="https://www.eventbrite.com/e/136495280057">https://www.eventbrite.com/e/136495280057</a>
Emergent Literacy in the VPK Classroom (VPK)		
Date	Time	Eventbrite Registration Invitation
Thursday, February 25, 2021	12:00 pm-1:30 pm	<a href="https://www.eventbrite.com/e/136848384201">https://www.eventbrite.com/e/136848384201</a>
Thursday, February 25, 2021	4:00 pm-5:30 pm	<a href="https://www.eventbrite.com/e/136848935851">https://www.eventbrite.com/e/136848935851</a>

\*Instructional support for English Language Learners is available for this session (e.g., someone who speaks Spanish).

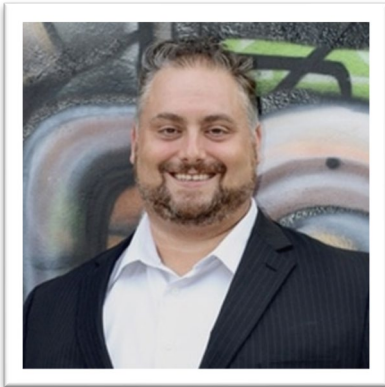


# *It Takes a Virtual Village*

## Monroe County Early Childhood Conference

*April 23<sup>rd</sup> and April 24<sup>th</sup> 2021*

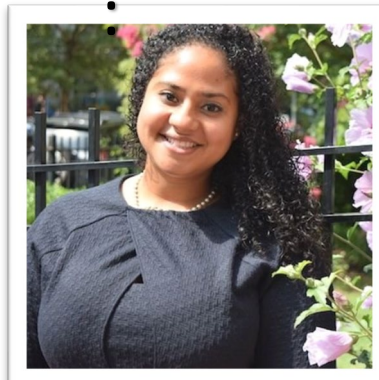
### Featured Speakers:



**Ron Shuali, MS Ed**  
(Yogarate)



**Katja von Elbe, MS Ed and  
Jonathan Eastman, MS**  
(Brainheart Guidance)



**Lucy Recio, MPA**  
Senior Analyst, Public Policy  
and Advocacy NAEYC



**Ian Humphrey**  
Motivational Speaker



**The Hon. Jim Mooney**  
Monroe County State Rep.

**Registration Opens: February 15<sup>th</sup>**



# PDI HELPDESK



Extended professional development support services for PDI students. You can call or email the PDI Helpdesk or join an interactive session with one of our experts to access:

- Training Support
- Technical Assistance
- Answers to all your questions



Miami-Dade/Monroe  
EARLY CHILDHOOD  
PROFESSIONAL DEVELOPMENT  
INSTITUTE

*A division of the Early Learning Coalition of Miami-Dade/Monroe*

# PDI Contact Information

Visit our website: [trainings.elcmdm.org](http://trainings.elcmdm.org)

Email us: [professionaldevelopment@elcmdm.org](mailto:professionaldevelopment@elcmdm.org)

Call us: 305 646-7220 ext.2350, 2320 or 2511



# Open Enrollment



**The Early Learning Coalition of Miami-Dade/Monroe is currently enrolling children in the School Readiness Program.**

**If you need help paying for childcare, please apply today at [bit.ly/ELCFreeChildCare](https://bit.ly/ELCFreeChildCare)**



**For additional information, call (305) 646-7220 or visit [www.elcmdm.org](http://www.elcmdm.org)**

# School Readiness Eligibility



## School Readiness Eligibility: Job Search and Reduced Hours

- ❑ “Job search” as purpose for care (initial eligibility and redetermining families) as a result of Covid-19 pandemic ***waiver was extended until 03/31/2021***
  - ❑ Examples of documentation to support job search as purpose for care or validate reduction in employment due to Covid-19: pay stubs, employer verification, letter of unemployment, etc.
  
- ❑ Reduced hour per week requirement care (initial eligibility and redetermining families) “purpose for care” as a result of Covid-19 pandemic ***waiver was extended 03/31/2021***
  
- ❑ If any children were removed from your attendance roster please email Eligibility to research what transpired. Please email [info@elcmdm.org](mailto:info@elcmdm.org)

# Parents Pending Enrollment Acceptance

- Parents will receive an automated email blast to parents with children's enrollments in Parents Pending Acceptance (PPA) status directly from EFS Mod system
- ELCMDM continues to place courtesy calls to parents and providers to document attempts made for parents pending enrollment acceptance
- Providers will view any PPA in their attendance. Once signed, the record status changes to Enrolled and the record will appear on the SR provider attendance roster for reimbursement
- Only exceptions: new enrollments with BG1 or BG3R billing groups or existing enrollments with this status that have already been submitted for attendance.
- Providers **will** be able to process attendance and be paid for these enrollments but not until the payment certificate is signed by the family.

Your child's enrollment with the child care provider you selected requires your electronic signature on the payment certificate in order to complete the enrollment. The payment certificate authorizes payment for services from the state to the child care provider. Failure to sign the payment certificate could result in the child's enrollment being ended and out-of-pocket expenses to accrue.

Please log into your family portal account at <http://familyservices.floridaearlylearning.com/> to review and sign the payment certificate. Once logged in, scroll down to the School Readiness Funding section and click the "Sign" button in the Payment Certificate column.

The ELC of the XXXXXXXXXXXX also provides Child Care Resource and Referral (CCR&R) services. CCR&R is the front door for family services in your county. CCR&R staff will let you know about community resources, child care options and other information that may be of assistance to you. Please contact your early learning coalition and ask to speak to a CCR&R specialist.

## Pending Payment Certificate(s)

You have one or more attendance rosters that are still **Pending Parent Acceptance**.

Please remind parent/guardian to log in to the Family Portal to electronically sign and accept their payment certificate for funding.

# How to Assist Parents with PFAs



[English Family Acceptance Tutorial Video](#) adversely click here for [Spanish Family Acceptance Tutorial Video](#) (press play when it loads in your browser).

# Contracts

## UPDATES

- 2021-2022 profiles are due now
- Email blast with specific instructions was sent out
- Contract Manager changes
- Transition to electronic amendments - Email blast with specific instructions will be sent out soon
- E-Verify registration confirmations and affidavits are now required documents for any new provider and all providers wishing to contract with the ELC for 2021-2022 Contract Term.



# Contracts

## PROFILE REQUIRED DOCUMENTATION

- **2021-2022 rate sheet**
- **2021-2022 holiday schedule** (include dates and name of the facility)
- **Updated W9 2018 Version** ([Click here to download](#))
- **Updated 2021 power of attorney** (only for individuals not listed on the Sunbiz who will sign the contracts)
- **Level 2 screening** for all officers listed on Sunbiz **or a letter** on the provider's letterhead stating the officers listed are not in the facility and do not have contact with the children.
- **Certificate of Liability Insurance** listing the Early Learning Coalition of Miami-Dade/Monroe as Additional Insured ([Click here for a sample](#))
- **Worker's Compensation Insurance** (if applicable)
- **E-Verify** registration confirmation **screenshot** ([Click here for a sample](#)) and notarized **affidavit** ([Click here for the affidavit](#))

# Contract Manager Contact Information

## Organization Name

### Alpha Assignment

### Contract Managers

### Ext.

### E-mail

A - B	Eilin Orozco	2454	<a href="mailto:eorozco@elcmdm.org">eorozco@elcmdm.org</a>
C - EDI	Vernise Casimir	2294	<a href="mailto:vcasimir@elcmdm.org">vcasimir@elcmdm.org</a>
EDU- INTER	Jennelle James	2273	<a href="mailto:jjames@elcmdm.org">jjames@elcmdm.org</a>
INTER BI- KLA	Marine Allen-Tucker	2541	<a href="mailto:mallen-tucker@elcmdm.org">mallen-tucker@elcmdm.org</a>
KLC-LIS	Ayleen Gonzalez	2230	<a href="mailto:agonzalez@elcmdm.org">agonzalez@elcmdm.org</a>
LIT - MID	Donna Bronigan	2528	<a href="mailto:dbronigan@elcmdm.org">dbronigan@elcmdm.org</a>
MIL - PINEC	Johnetta Nuby	2300	<a href="mailto:jnuby@elcmdm.org">jnuby@elcmdm.org</a>
PINEV- ST. L	Laurie Bravo	2377	<a href="mailto:lbravo@elcmdm.org">lbravo@elcmdm.org</a>
STAR-THR	Sheyla Perez	2292	<a href="mailto:sperez@elcmdm.org">sperez@elcmdm.org</a>
THU-Z	Isha Sanders	2577	<a href="mailto:isanders@elcmdm.org">isanders@elcmdm.org</a>
MDCPS and Monroe County	<b>Yadira Aguilar</b>	2253	<a href="mailto:yaguilar@elcmdm.org">yaguilar@elcmdm.org</a>

Screenshot of company information page from E-Verify



Official Website of the Department of Homeland Security

**E-Verify** Welcome Company User ID

HOME CASES PROFILE COMPANY REPORTS RESOURCES LOG OUT

### Company Information

Company Name	Company ID Number	Doing Business As (DBA) Name
	DUNS Number	--
	--	
<b>Physical Location</b>	<b>Mailing Address</b>	
Address 1	Address 1	
	--	
Address 2	Address 2	
	--	
City	City	
	--	
State	State	
	--	
Zip Code	Zip Code	
	--	
County		
<b>Additional Information</b>		
Employer Identification Number	Total Number of Employees	Parent Organization
		--
Administrator		
--		
<b>Organization Designation</b>		
Employer Category		
--		

[View / Edit](#)

*Reuniones Web Semanales para Socios de  
Educación y Cuidado Temprano*

Febrero 10, 2021

## Important Dates

*Fechas  
importantes*

- **Provider Services Committee Meeting**
- Thursday, February 25, 2021
- Zoom Meeting ID: 978 7055 6219; Passcode: ELC0225
  
- **Board of Directors Meeting**
- Monday, March 1, 2021
- Zoom Meeting ID: 919 4073 2249; Passcode: 03012020

Provider  
Representatives

*Representantes de  
los Proveedores*

- **Ms. Loreen Chant**
  - President/CEO of Easter Seals South Florida
  - Representative of program under federal Individuals with Disabilities Education Act
  
- **Ms. Jennifer Roig**
  - President/Founder of the Roig Academy
  - Representative of private for-profit child care providers
  
- **Dr. Eileen Fluney**
  - Executive Director of Paradise Christian School & Development Center
  - Representative of faith based child care providers

[myproviderrep@elcmdm.org](mailto:myproviderrep@elcmdm.org)

# Vacante de la Junta



- El Early Learning Coalition de Miami- Dade/Monroe está buscando un candidato para la Junta Directiva para ocupar el cargo de Representante de un programa de cuidado infantil bajo la ley federal de educación para personas con discapacidades.
- El candidato debe :
  - residir en Florida y
  - Estar asociado con una entidad comercial de cuidado infantil de Educación para Discapacidades que realice negocios en el condado Miami-Dade o de Monroe.
- Comuníquese con Lisa Sanabria al (305) 646-7220 x2246 para obtener una solicitud, o visite nuestro sitio web, [www.elcmdm.org](http://www.elcmdm.org) y haga clic en este [enlace](#) para la solicitud para la Junta Directiva.
- Las solicitudes deben enviarse antes del 26 de febrero de 2021.

# Celebración de las Manos



Sea parte de una tradición y haga que el arte de las manos de sus niños se incluya en la Celebración de las Manos para la Semana Infantil de la Florida 2021.

**Envíe por correo el arte de las manos antes del 19 de marzo de 2021**

**The Early Learning Coalition of the Big Bend Region  
2639 N. Monroe Street, Building C  
Tallahassee, FL 32303**

[Haga clic aquí](#) para descargar el volante de la Celebración de las Manos y las instrucciones sobre cómo crear el arte de la manos.



# Subvenciones para pequeñas empresas de hasta \$ 10,000



[http://www.careersourcesfl.com/layoffaversion\\_GMiamiCC/](http://www.careersourcesfl.com/layoffaversion_GMiamiCC/)

- El Greater Miami Chamber of Commerce y CareerSource SF han **reservado \$500,000 para subvenciones a pequeñas empresas para REEMBOLSAR los gastos relacionados con COVID-19** mientras se adaptan para mantener abierto y mantener a los trabajadores empleados.
- Estas subvenciones son estrictamente para reembolso y son bastante fáciles de obtener para las empresas que califiquen y que puedan justificar sus gastos.
- Alentamos a nuestros miembros de pequeñas empresas (3-50 empleados) a solicitar el programa de subvenciones. Sin embargo, **solo aplique si puede marcar toda la información de calificación necesaria en la lista de verificación aquí .**
- Si tiene preguntas o información adicional, comuníquese con [layoffaversion@miamichamber.com](mailto:layoffaversion@miamichamber.com) u obtenga más información sobre asistencia a través de la Cámara <https://www.miamichamber.com/gmcc-cares>

## CRRSA Seminarios Web

- Los proveedores de cuidado y educación: Tomando ventaja de la administración de préstamos pequeña empresa nueva y programas de becas
- Estos seminarios web brindan una descripción general de los recursos comerciales en la Ley de Asignaciones Suplementarias de Respuesta y Alivio del Coronavirus, 2021 (CRRSA), que se promulgó el 27 de diciembre de 2020.
- <https://childcareta.acf.hhs.gov/early-care-and-education-providers-taking-advantage-new-small-business-administration-loan-and-grant>



## Virtual Study Buddies for the Courses Included in the DOE Approved Staff Development Plan (SDP)



Implementing the Florida Early Learning and Developmental Standards in Preschool Classrooms: 3 Years Old to Kindergarten (VFSP)		
Date	Time	Eventbrite Registration Invitation
*Wednesday, February 10, 2021	10:30 am-12:00 pm	<a href="https://www.eventbrite.com/e/136972026017">https://www.eventbrite.com/e/136972026017</a>
*Thursday, February 18, 2021	3:00 pm-4:30 pm	<a href="https://www.eventbrite.com/e/136972220599">https://www.eventbrite.com/e/136972220599</a>
Integrating the Standards: Phonological Awareness (VIPA)		
Date	Time	Eventbrite Registration Invitation
*Thursday, February 11, 2021	1:00 pm-2:30 pm	<a href="https://www.eventbrite.com/e/136449954487">https://www.eventbrite.com/e/136449954487</a>
*Tuesday, February 23, 2021	6:30 pm-8:00 pm	<a href="https://www.eventbrite.com/e/136451015661">https://www.eventbrite.com/e/136451015661</a>
Language and Vocabulary in the VPK Classroom (LVPK)		
Date	Time	Eventbrite Registration Invitation
Tuesday, February 9, 2021	1:00 pm-2:30 pm	<a href="https://www.eventbrite.com/e/136847240781">https://www.eventbrite.com/e/136847240781</a>
Tuesday, February 9, 2021	5:00 pm-6:30 pm	<a href="https://www.eventbrite.com/e/136847674077">https://www.eventbrite.com/e/136847674077</a>
How to Administer the Florida VPK Assessment (HTVA)		
Date	Time	Eventbrite Registration Invitation
*Wednesday, February 3, 2021	12:30 pm-2:00 pm	<a href="https://www.eventbrite.com/e/136493566933">https://www.eventbrite.com/e/136493566933</a>
*Tuesday, February 9, 2021	12:30 pm-2:00 pm	<a href="https://www.eventbrite.com/e/136494058403">https://www.eventbrite.com/e/136494058403</a>
VPK Assessment Instructional Implications (VAII)		
Date	Time	Eventbrite Registration Invitation
*Friday, February 5, 2021	12:30 pm-2:00 pm	<a href="https://www.eventbrite.com/e/136494768527">https://www.eventbrite.com/e/136494768527</a>
*Wednesday, February 23, 2021	12:30 pm-2:00 pm	<a href="https://www.eventbrite.com/e/136495280057">https://www.eventbrite.com/e/136495280057</a>
Emergent Literacy in the VPK Classroom (VPK)		
Date	Time	Eventbrite Registration Invitation
Thursday, February 25, 2021	12:00 pm-1:30 pm	<a href="https://www.eventbrite.com/e/136848384201">https://www.eventbrite.com/e/136848384201</a>
Thursday, February 25, 2021	4:00 pm-5:30 pm	<a href="https://www.eventbrite.com/e/136848935851">https://www.eventbrite.com/e/136848935851</a>

\*Instructional support for English Language Learners is available for this session (e.g., someone who speaks Spanish).

# PDI InfoCentro



Servicios extendidos de apoyo al desarrollo profesional para estudiantes de PDI. Puede llamar o enviar un correo electrónico al servicio de asistencia técnica de PDI o unirse a una sesión interactiva con uno de nuestros expertos para acceder a:

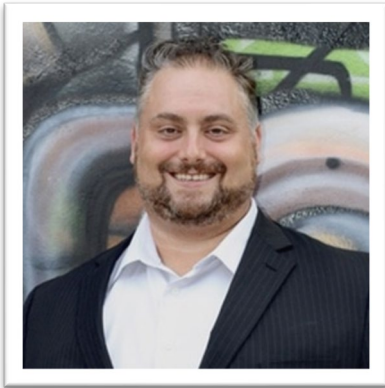
- Apoyo a la formación
- Asistencia técnica
- Respuestas para todas tus preguntas

# *It Takes a Virtual Village*

## Monroe County Early Childhood Conference

*Abril 23 and Abril 24 2021*

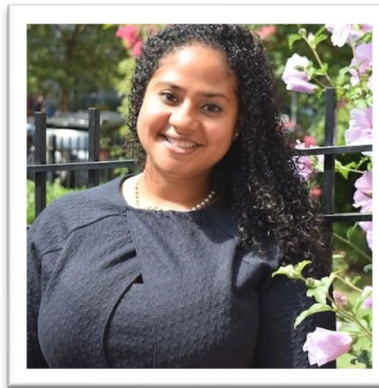
### Presentadores:



**Ron Shuali, MS Ed**  
(Yogarate)



**Katja von Elbe, MS Ed and  
Jonathan Eastman, MS**  
(Brainheart Guidance)



**Lucy Recio, MPA**  
Senior Analyst, Public Policy  
and Advocacy NAEYC



**Ian Humphrey**  
Motivational Speaker



**The Hon. Jim Mooney**  
Monroe County State Rep.

**Registracion: Febrero 15**





Miami-Dade/Monroe  
EARLY CHILDHOOD  
PROFESSIONAL DEVELOPMENT  
INSTITUTE

*A division of the Early Learning Coalition of Miami-Dade/Monroe*

# Contactanos:

Visita nuestro website: [trainings.elcmdm.org](http://trainings.elcmdm.org)

Email: [professionaldevelopment@elcmdm.org](mailto:professionaldevelopment@elcmdm.org)

Llamanos: 305 646-7220 ext.2350, 2320 or 2511



# Matriculación para School Readiness



**El Early Learning Coalition of Miami-Dade/Monroe esta matriculando a los niños en el Programa de School Readiness.**

**Si necesita ayuda para pagar el cuidado infantil, solicítela hoy en [bit.ly/ELCFreeChildCare](https://bit.ly/ELCFreeChildCare)**

**Para obtener información adicional, llame (305) 646-7220 o visite [www.elcmdm.org](http://www.elcmdm.org)**



# Elegibilidad de preparación escolar

## Elegibilidad de preparación escolar: búsqueda de empleo y reducción de horas

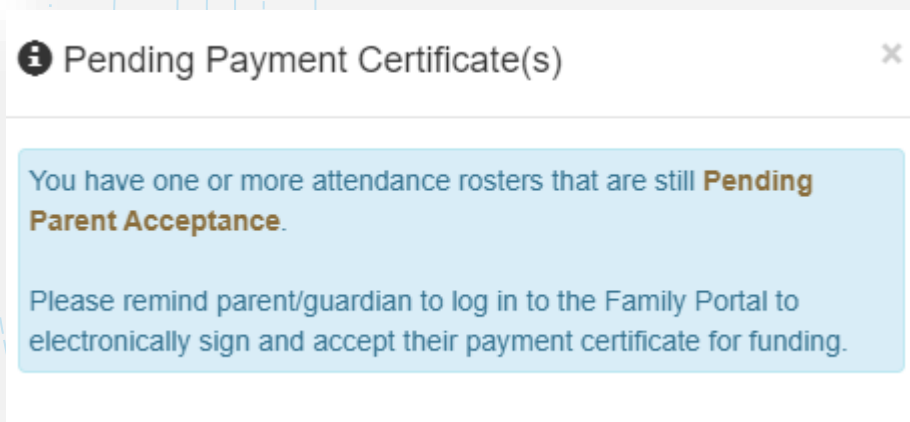
- ❑ La **exención para "búsqueda de empleo"** como propósito de elegibilidad inicial y re-determinación de las familias, como resultado de la **pandemia Covid-19 se extendió hasta el 31/03/2021**
  - ❑ Ejemplos de documentación para respaldar la búsqueda de trabajo como propósito de atención o validar la reducción en el empleo debido a Covid-19: talones de pago, verificación del empleador, carta de desempleo, etc.
- ❑ La **exención para reducción del requisito de horas por semana** para cumplir con el "propósito de elegibilidad" como resultado de la **pandemia Covid-19 se extendió hasta el 31/03/2021**
- ❑ Si algún niño fue eliminado de su lista de asistencia, envíe un correo electrónico a Elegibilidad para investigar lo que sucedió. Por favor enviar el correo electrónico a **[info@elcmdm.org](mailto:info@elcmdm.org)**





# Padres con aceptacion de inscripcion pendiente

- Los padres con aceptacion de inscripcion pendiente recibiran un correo automatico de parte de EFS MOD para que firmen el certificado de servicio.
- ELCMDM continua recordando a los padres y proveedores de los certificados de servicio pendientes de firma y aceptacion.
- Los proveedores verán a los padres pendientes de aceptacion en su lista de asistencia. Una vez firmado el certificado, el estado del registro cambia a Inscrito y el registro aparecerá en la lista de asistencia al proveedor SR para el reembolso
- Las unicas excepciones: nuevas inscripciones con grupos de facturación BG1 o BG3R o inscripciones existentes con este estado que ya se han enviado para reembolso de asistencia.
- Los proveedores podrán procesar la asistencia y se les pagará por estas inscripciones, pero no hasta que el certificado de pago sea firmado por la familia.



Your child's enrollment with the child care provider you selected requires your electronic signature on the payment certificate in order to complete the enrollment. The payment certificate authorizes payment for services from the state to the child care provider. Failure to sign the payment certificate could result in the child's enrollment being ended and out-of-pocket expenses to accrue.

Please log into your family portal account at <http://familyservices.floridaearlylearning.com/> to review and sign the payment certificate. Once logged in, scroll down to the School Readiness Funding section and click the "Sign" button in the Payment Certificate column.

The ELC of the XXXXXXXXXXXX also provides Child Care Resource and Referral (CCR&R) services. CCR&R is the front door for family services in your county. CCR&R staff will let you know about community resources, child care options and other information that may be of assistance to you. Please contact your early learning coalition and ask to speak to a CCR&R specialist.

Como ayudar  
a los padres  
con  
acceptacion  
pendiente



[English Family Acceptance Tutorial Video](#) adversely click here for [Spanish Family Acceptance Tutorial Video](#) (press play when it loads in your browser).

# Contratos

## ACTUALIZACIONES

- Los perfiles 2021-2022 están disponible ahora
- Se envió un correo electrónico con instrucciones específicas
- Cambios de su manager de contratos
- Transición a adendum electrónicas: pronto se enviará un correo electrónico con mas información
- Las **confirmaciones de registro** de E-Verify y las **declaraciones juradas** ahora son documentos obligatorios para cualquier proveedor nuevo y todos los proveedores que deseen contratar con el ELC para el contrato 2021-2022.

# Contratos

## DOCUMENTACIÓN REQUERIDA DE PERFIL

- **Hoja de tarifas 2021-2022**
- **Calendario de vacaciones 2021-2022** (incluya fechas y nombre del centro)
- **W9 2018** ([haga clic aquí para descargar](#))
- **Poder notarial actualizado en 2021** (solo para personas que no aparecen en Sunbiz y que firmarán los contratos)
- **Investigación de antecedentes** para todos los oficiales en Sunbiz o una carta con membrete del proveedor que indique que los oficiales de Sunbiz no están en centro y no tienen contacto con los niños.
- **Certificado de seguro de responsabilidad** que incluye a la Coalición como asegurado adicional ([haga clic aquí para ver una muestra](#))
- **Seguro de compensación para trabajadores** (si corresponde)
- **Captura de pantalla de confirmación de registro de E-Verify** ([haga clic aquí para ver una muestra](#)) y **declaración jurada** notariada ([haga clic aquí para ver la declaración jurada](#))

# Información de contacto del manager de contratos

## Organization Name

### Alpha Assignment

### Contract Managers

### Ext.

### E-mail

A - B	Eilin Orozco	2454	<a href="mailto:eorozco@elcmdm.org">eorozco@elcmdm.org</a>
C - EDI	Vernise Casimir	2294	<a href="mailto:vcasimir@elcmdm.org">vcasimir@elcmdm.org</a>
EDU- INTER	Jennelle James	2273	<a href="mailto:jjames@elcmdm.org">jjames@elcmdm.org</a>
INTER BI- KLA	Marine Allen-Tucker	2541	<a href="mailto:mallen-tucker@elcmdm.org">mallen-tucker@elcmdm.org</a>
KLC-LIS	Ayleen Gonzalez	2230	<a href="mailto:agonzalez@elcmdm.org">agonzalez@elcmdm.org</a>
LIT - MID	Donna Bronigan	2528	<a href="mailto:dbronigan@elcmdm.org">dbronigan@elcmdm.org</a>
MIL - PINEC	Johnetta Nuby	2300	<a href="mailto:jnuby@elcmdm.org">jnuby@elcmdm.org</a>
PINEV- ST. L	Laurie Bravo	2377	<a href="mailto:lbravo@elcmdm.org">lbravo@elcmdm.org</a>
STAR-THR	Sheyla Perez	2292	<a href="mailto:sperez@elcmdm.org">sperez@elcmdm.org</a>
THU-Z	Isha Sanders	2577	<a href="mailto:isanders@elcmdm.org">isanders@elcmdm.org</a>
MDCPS and Monroe County	<b>Yadira Aguilar</b>	2253	<a href="mailto:yaguilar@elcmdm.org">yaguilar@elcmdm.org</a>

# E-Verify

Captura de pantalla de la página de información de la empresa de E-Verify)

Official Website of the Department of Homeland Security

**E-Verify** Welcome Company User ID

HOME CASES PROFILE **COMPANY** REPORTS RESOURCES LOG OUT

### Company Information

Company Name	Company ID Number	Doing Business As (DBA) Name
	DUNS Number	--
	--	
<b>Physical Location</b>	<b>Mailing Address</b>	
Address 1	Address 1	
	--	
Address 2	Address 2	
	--	
City	City	
	--	
State	State	
	--	
Zip Code	Zip Code	
	--	
County		
<b>Additional Information</b>		
Employer Identification Number	Total Number of Employees	Parent Organization
		--
Administrator		
--		
<b>Organization Designation</b>		
Employer Category		
--		

[View / Edit](#)