



**Strategic Planning Meeting
August 24, 2020, 3:00 pm
Zoom Meeting ID: 941 6837 0488**

- | | | |
|------|------------------------------------|--------------|
| I. | Welcome & Introductions | Loreen Chant |
| II. | Strategic Planning Retreat Updates | Loreen Chant |
| III. | Public Comments | Loreen Chant |
| IV. | Meeting Adjourn | Loreen Chant |

DRAFT

Mission: To promote high-quality school readiness, voluntary pre-kindergarten and after school programs, thus increasing all children's chances of achieving future educational success and becoming productive members of society. The Coalition seeks to further the physical, social, emotional and intellectual needs of Miami-Dade and Monroe County children with a priority toward the ages before birth through age 5.



Strategic Planning Committee Notes

2020 Meeting



Mission and Vision

Mission

To promote high-quality inclusive school readiness, voluntary pre-kindergarten and after school programs, thus increasing all children's chances of achieving future educational success and becoming productive members of society. The Coalition seeks to further the physical, social, emotional and intellectual development of Miami-Dade and Monroe County children with a priority toward the ages birth through age 5.

Vision

Children First

To ensure a comprehensive and integrated early learning system for all families and their children, birth to 5 years, ensuring high-quality programs throughout Miami-Dade and Monroe Counties, so children enter school ready to learn and succeed in life.

Early Education. Lifelong Success.



Children First: The Strategic Plan for the Early Learning Coalition of Miami Dade/Monroe 2017-2022



Early Education. Lifelong Success.

OUR MISSION

To promote high-quality inclusive school readiness, voluntary pre-kindergarten and after school programs, thus increasing all children's chances of achieving future educational success and becoming productive members of society. The Coalition seeks to further the physical, social, emotional and intellectual development of Miami-Dade and Monroe County children with a priority toward the ages birth through age 5.

OUR VISION

CHILDREN FIRST

To ensure a comprehensive and integrated early learning system for all families and their children, birth to 5 years, ensuring high-quality programs throughout Miami-Dade and Monroe Counties, so children enter school ready to learn and succeed in life.

OUR VALUES

- CHILDREN** - Children are at the heart of all we do. We believe that all children, regardless of circumstance, are capable of educational excellence and personal growth, and we are committed to ensuring school readiness and lifelong success for each one.
- COMMUNITY** - We believe children are the future, and our community is an essential part of their road to success. By working together, we can promote high quality early education and support children as they become thriving, productive members of society.
- PARTNERSHIP** - We value partnerships and are collaborative in all we do. We work closely with fellow service providers, families, corporations, elected officials, individuals, and the community at large to promote the importance of early learning and to secure educational opportunities for all children.
- ADVOCACY** - We are a champion for children, promoting positive societal and community change. Our staff and community partners are committed to advancing early education throughout Miami-Dade and Monroe counties and are set apart by our collective passion, strength and dedication to children.
- EXCELLENCE** - When it comes to early learning, quality matters. We are committed to excellence, providing quality programs and services that make a difference in our community. Designed to further the physical, social, emotional and intellectual needs of all children, our programs are innovative and offer each child an equal opportunity for a successful future.
- CUSTOMER SERVICES** - We strive to meet the needs of our parents, families, providers and partners by providing comprehensive customer service in a professional, timely and courteous manner.
- EQUITY** - In working with parents, families, providers, and partners, we are committed to the principle of equity and balance, so that all may benefit from the work we do, while keeping children first.

PRIORITY INITIATIVES

NEEDIEST CHILDREN

Improve outcomes for children in our neediest communities, including children with developmental and other delays and disabilities, by improving the quality of early learning programs

RECOMMENDATION: Assign to Program Committee.

Target neediest areas

Identify centers in distressed zip codes and those serving children with, or at risk for, developmental delays & provide extra support for them to meet higher standards

Increase the Number of Children

Receiving services who have physical, developmental, sensory, and social-emotional delays and disabilities

YOUNGEST CHILDREN

Offer a continuum of care throughout childhood, with a particular focus on infants and toddlers

Age-based Rates

Adjust reimbursement rates to offer incentives to serve the youngest children

PROVIDERS

Strengthen Coalition relationship with providers and support providers meeting higher quality performance requirements

Improve Provider Selection and Contracting Process

Establish local provisions that support parental choice and ensure providers serving children receiving subsidies meet contract and quality requirements

Teacher Education

Increase the number of teachers with child care credentials

Quality Providers

Drive incentives to higher performing providers

Technical Business Assistance

Offer business assistance to providers in distressed areas

Educate Providers

Provide program directors/staff with training and resources to provide high quality care to all children, including children with disabilities

EDUCATE ALL

Educate families and the community at large about the BENEFITS of quality early learning. **RECOMMENDATION:** Refine definition and quantify.

Parental Choice

Develop innovative strategies to help parents choose child care programs that ensure better outcomes for their children

Visibility

Achieve increased visibility of the importance of early learning throughout both counties by creating child care resources and providing information

CAPACITY BUILDING

Strengthen Board and Staff capacity to carry out strategic goals

Advocacy

Engage aggressively & systematically in advocacy to drive better outcomes for children. **RECOMMENDATION:** Redefine/quantify.

Early Child Care Education Systems Building

Establish regular meetings with partners to strengthen cross-sector investments and policies for children birth through age five

FUNDING

Increase public and private funding and reallocate funds to strategic goals

Public

Secure adequate resources to ensure high quality delivery to each child we serve

Monroe County

Establish a Permanent Funding Model for Social Services

FIVE YEAR STRATEGIC GOALS

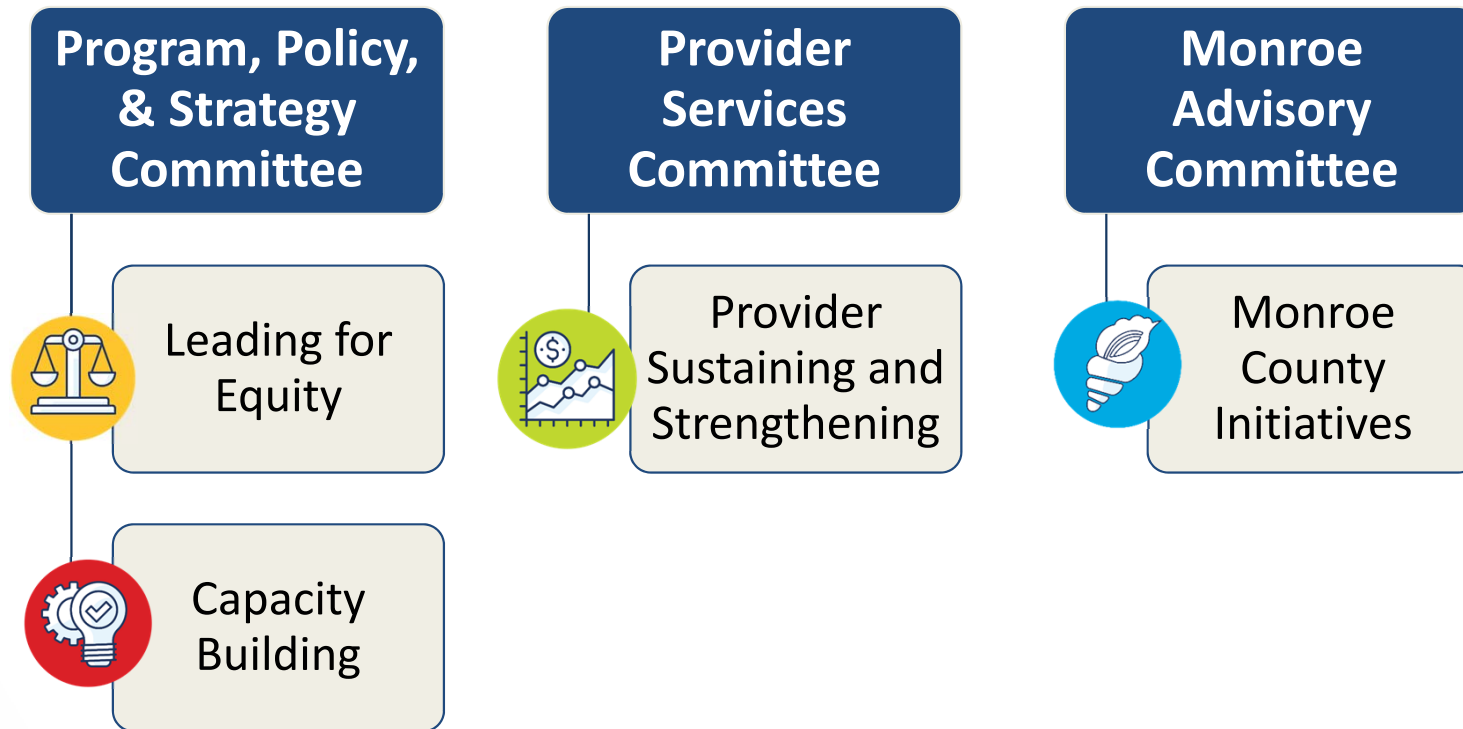
Develop widely accepted state-wide benchmarks of quality (e.g. Child assessments, accreditation, learning environment, etc.)

Change state policy to allow ELCs to contract only with child care programs that meet state-wide quality benchmarks

Establish the Performance Funding Program platform as the statewide quality, tiered reimbursement and pay for performance model

Break-out Groups

- **Recommendation: Incorporate into existing Committees**





Provider Sustaining and Strengthening

- **Recommendation: Help Providers Maximize their Enrollment**
- Provider Services Committee to take lead
- Provide Data on Under Enrollment
 - Capacity
 - Enrollment
 - Attendance
- Child Care Safety Campaign

- **Recommendation: Identify Community Partner as Resource Clearinghouse**
- Financial Resources
- Small Business Educational Resources
- Educational, Technical, Teacher Training
- Disaster Planning and Recovery
- Expand Role of Provider Board Representatives



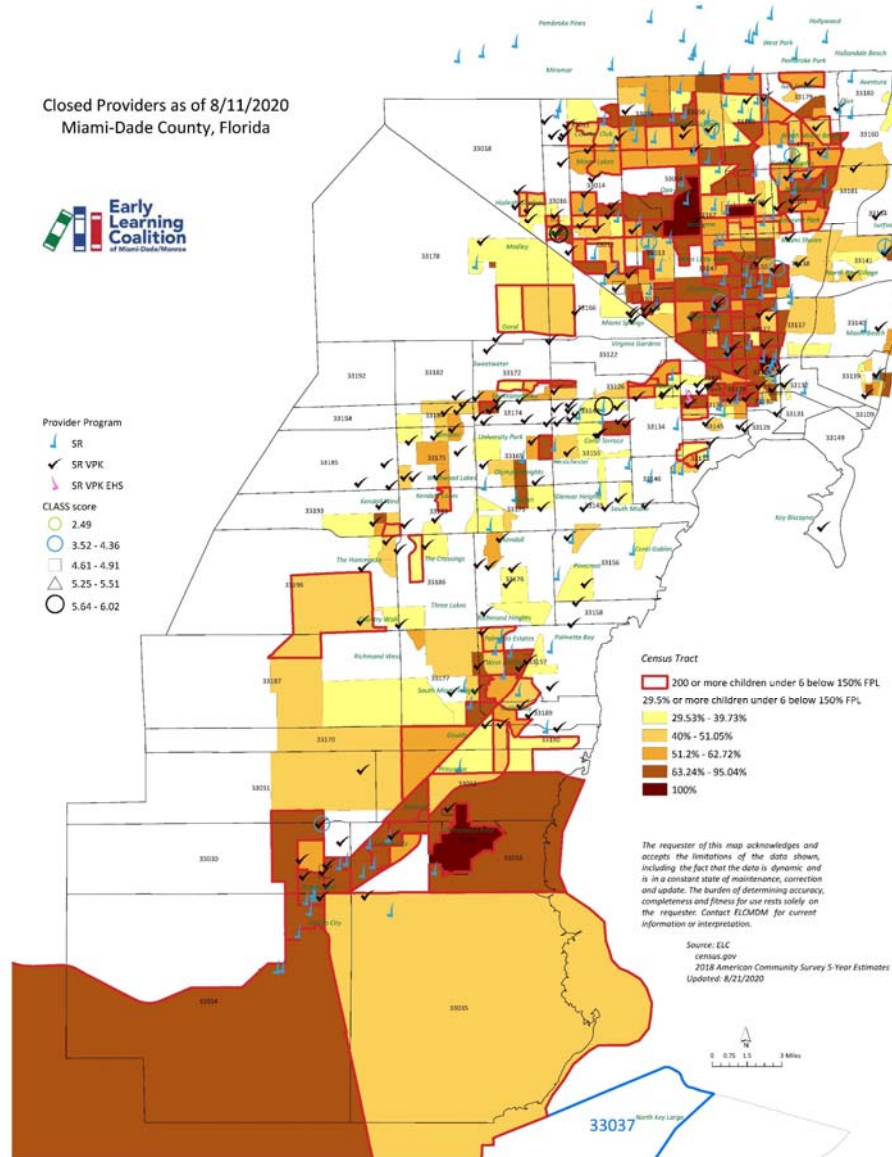
Virtual Programming

- **Recommendation: Provide training and professional development to providers.**
- Provide training for teachers to deliver high-quality virtual programming
 - Miami-Dade and Monroe County Public Schools
 - OEL guidance on Virtual Assessments
 - Grant Application Module

Closed Providers as of 8/11/2020
Miami-Dade County, Florida



- Provider Program
- SR
 - SR VPK
 - SR VPK EHS
- CLASS score
- 2.49
 - 3.52 - 4.36
 - 4.61 - 4.91
 - 5.25 - 5.51
 - 5.64 - 6.02





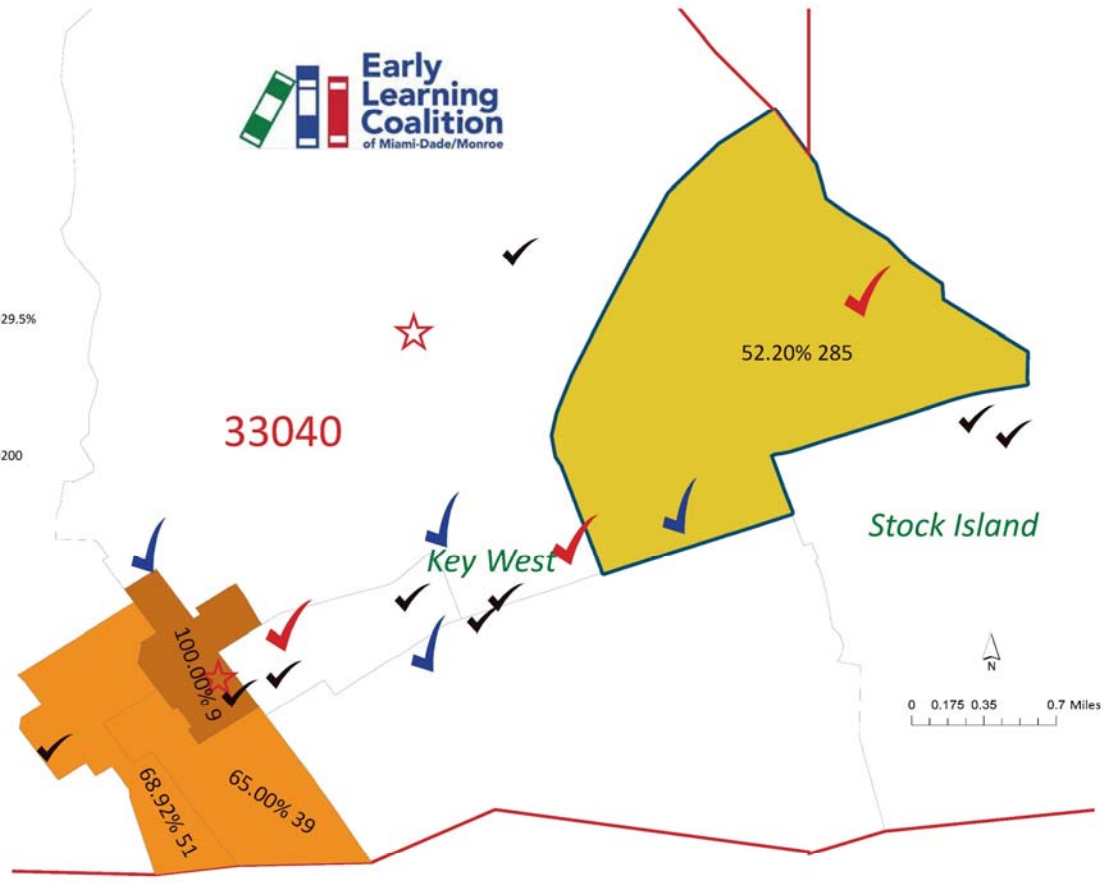
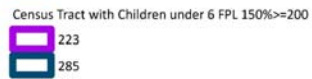
Capacity Building

- **Recommendation: Convene Early Learning Task Force**
- Meetings among the Early Learning Coalition, The Children's Trust, Miami Foundation, and United Way currently in place
 - Add additional partners
 - The Children's Movement
 - Beacon Council
 - Department of Children and Families
- **Recommendation: Add Greater Miami Chamber Member to Board**
- Nominating Committee to take lead



Monroe VPK Initiative

- Conduct Monroe County Needs Assessment
 - Request for Proposal to identify vendor
 - Explore Special Needs Rates ([Program Committee](#))
 - Monroe County-Map of all childcare centers, poverty census track, closures and CLASS scores
 - Tele-therapy for Monroe County children
 - VPK SIS



Census Tracts 2019
with 29.5% or more young children (under 6) living in households below 150% FPL
or at least 200 young children (under 6) living below 150%
Zip Code 33040, Monroe County, Florida

The requester of this map acknowledges and accepts the limitations of the data shown, including the fact that the data is dynamic and is in a constant state of maintenance, correction and update. The burden of determining accuracy, completeness and fitness for use rests solely on the requester. Contact ELCMDM for current information or interpretation.

Source:
census.gov
2018 American Community Survey 5-Year Estimates
Updated: 7/29/2020



Communication

- **Recommendation: Identify options to improve communication with providers.**
- Increase quantity and quality of provider communication
 - Weekly Provider Calls to provide updates (*new*)
 - Provider Facebook Group for Directors and Owners (*new*)
 - Daily to Weekly Social Media Posts
 - Frequent e-mail news alerts
 - Weekly PDI Training Newsletter
 - Provider Corner Section on Website
 - Conch Corner Monroe Provider Monthly Newsletter