



Message from the ELC

This notice is about:

- | | |
|---|--|
| <input type="checkbox"/> Important Deadline | <input type="checkbox"/> Compliance with State Requirement |
| <input checked="" type="checkbox"/> Free Resource(s) | <input checked="" type="checkbox"/> Professional Development Opportunity |
| <input type="checkbox"/> School Readiness, VPK or other Contract Compliance | <input checked="" type="checkbox"/> Informational |

Early Learning Florida is a comprehensive, evidence-based system of professional development designed to "Empower Professionals" by increasing their knowledge of research-based practice and improving their skills and effectiveness through guided practice, reflection, and state-of-the-art technology.

Courses are available 24-7 and offer opportunities to collaborate with hundreds of early learning professionals and other experts and coaches to explore best practices, share ideas, and implement career-changing strategies.

To visit the Early Learning Florida site, click [here](#).

Click the images below for course catalog and resource information.

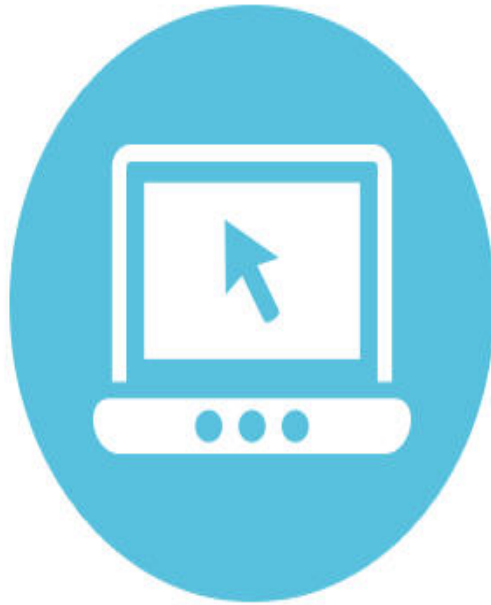
July 2016



Early Learning Florida now offers **17 courses** for practitioners, including Preschool Learning Environments and Infant Developmental Stages: The First Year of Life.

Take a look at our updated Fall catalog.

Resource Kit



We have created an online "E-Magazine" **Resource Kit** for your convenience. Within it, you can reference support documents to better manage your practitioners' Early Learning Florida experience.

Please tell us your feedback on this Resource Kit!

Fall 2016 Term Dates



Term begins - 9/26

Administrative Withdrawal Week - 10/17 – 10/21

Intermission Week is - 11/21 – 11/27

Term ends - 12/11



OFFICE OF
Early Learning
LEARN EARLY. LEARN FOR LIFE.

Stay Connected

Join Our Mailing List!



Miami-Dade: 2555 Ponce de Leon Blvd., Suite 500, Coral Gables, FL 33134 305.646.7220
Monroe: 1111 12 Street, Suite 1-206, Key West, FL 33040 305.296.5557